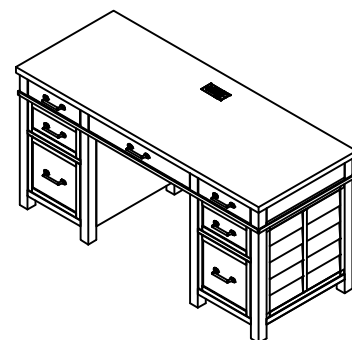


Warning :

- Be sure to check all packing material carefully for small parts, which may have come loose inside the carton during shipment.
- To prevent possible scratches and damage, this furniture must be assembled on a soft surface such as a blanket or carpet.

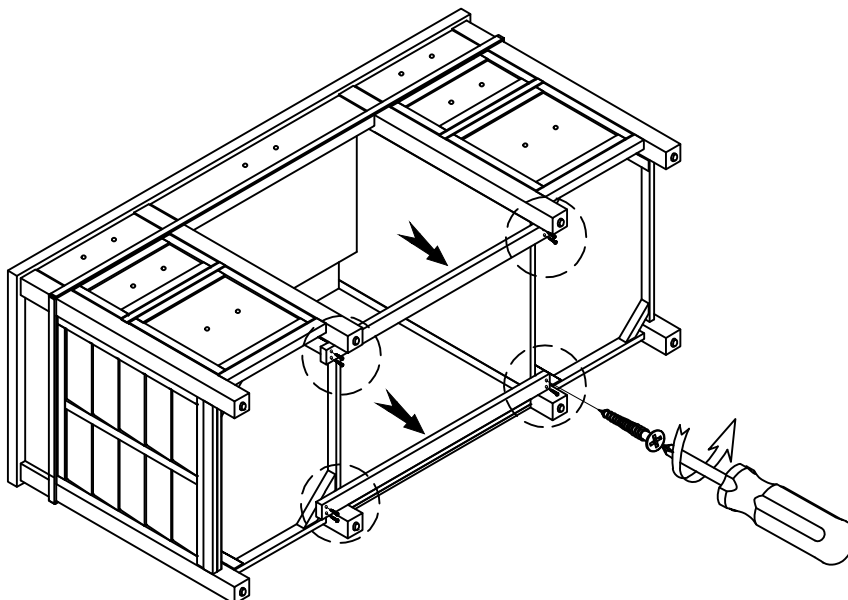
Components and Hardware List

Important Use Information: We recommend using coasters, placemats and trivets when placing hot or cold containers on this item. It is also recommended to quickly cleanup any spills to minimize exposure to moisture. Doing so will prolong the life and look of the item for many years.

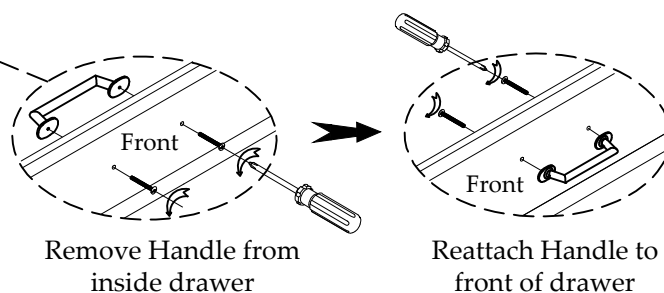
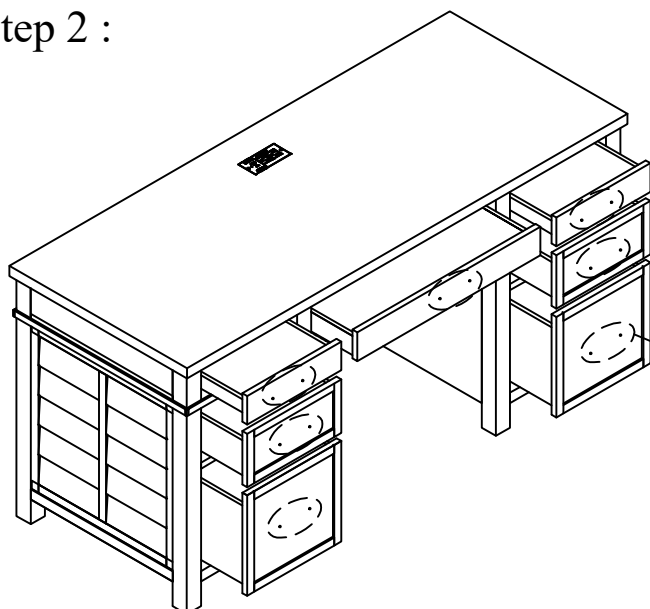


28631
Executive Desk

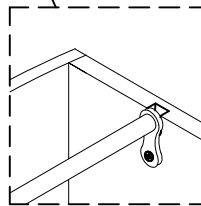
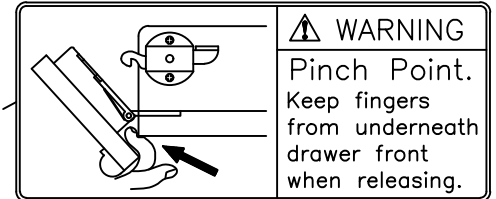
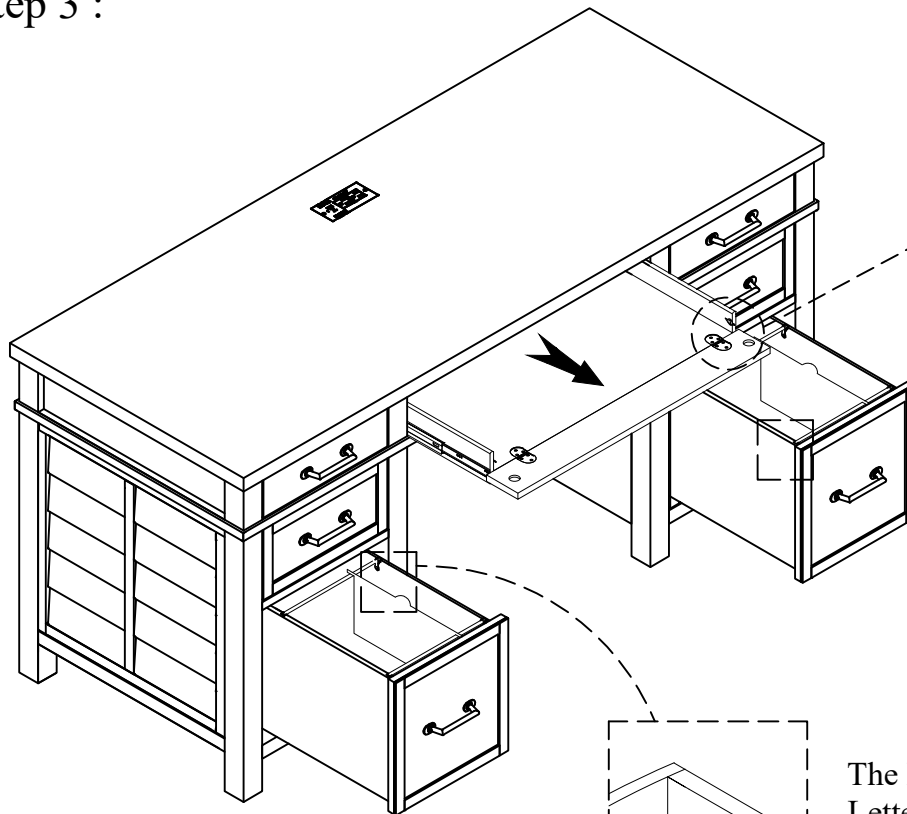
Step 1 : Remove shipping brace by removing screws as shown. Discard the rail.



Step 2 :

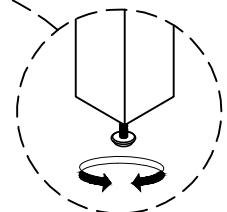
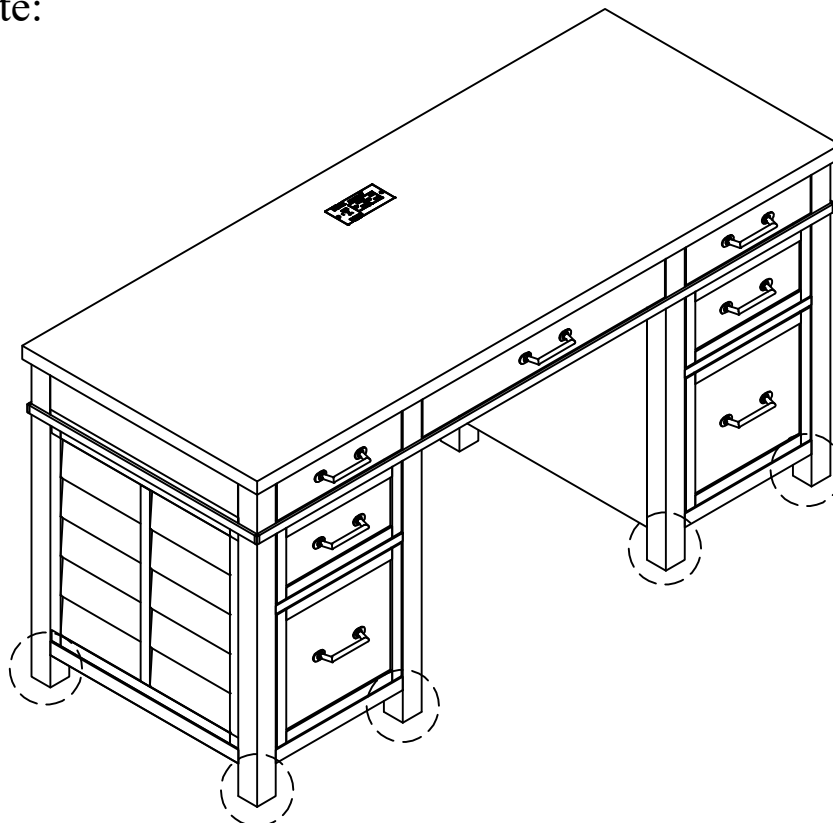


Step 3 :



The Rod is designed to accommodate Letter-size documents only.

Complete:



Adjustable leveler 8 pcs

The File Drawers can be set up to use alone Letter size hanging file folders using the File Rods installed in the drawers.